



HULK II

GRANULATED TIRE FILL SYSTEM



PARTS CATALOG



**POLYCOAT
PRODUCTS**
A Division of American Polymers Corp.

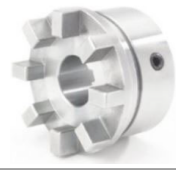
*For current pricing and lead times please visit us on the web
or contact us at info@polyfilusa.com*

www.polyfilusa.com
www.polycoatusa.com





QF15X1-7/16 Coupling Hub



QF15X1 Coupling Hub



QF15TINSERT HP Black Cushion



QF15HPCOVER High Performance Cover



Tapered Roller Bearing Race



Tapered Roller Bearing and Seal



Screw Shaft Bearing Inner Race



Screw Shaft Bearing Outer Race



Injector Screw-Machined from Solid



*A-Side (ISO) WB, A-Side and B-Side (CAT) Oil Base Pump
- Aluminum Body*



*A-Side (ISO) WB, A-Side and B-Side (CAT) Oil Base Pump
- Cast Iron Body*



B-Side (CAT) Water Base Pump



1450 PSI Pressure Transmitter & Cover



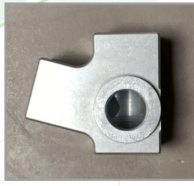
1000 PSI System Operating Pressure Transmitter



3/4" Stainless Steel Mixer Tube



3/4" Mixer Element



Fill Gun Body for use with Electronic Digital Pressure Gauge and Display



Valve Stem Adapter - Standard Length
Valve Stem Adapter - Extended Length



Standard Length Core Plunger and Seal Assy
Extended Length Core Plunger and Seal Assy



3/4" Male Quick Connect Coupler



3/4" Female Quick Connect Coupler



3/4" Male Quick Connect Insert



Replacement Silicone Rubber O-Ring (Package of 10 pcs)



3/4" High Pressure Check Valve