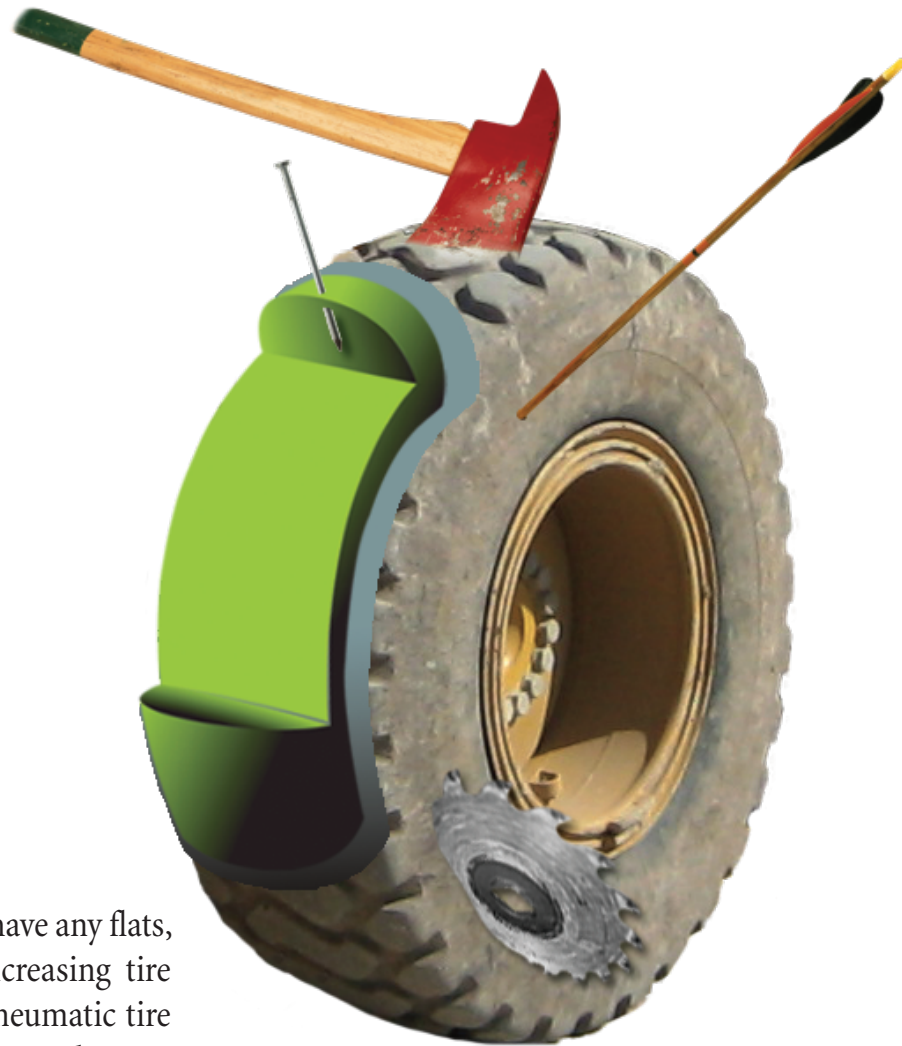


"No More Flats!"

Applications

NASA
U.S. Military
Major Construction Companies
Mining
Major Amusement Parks
Equipment Rental Companies
Agricultural Industry
Municipalities
State Highway Departments
Steel Mills
Waste Management
Scrap Yard



Tires filled with Poly-fil® products will not have any flats, blow outs, or run under-inflated (thus increasing tire life). Poly-fil® is made for all varieties of pneumatic tire construction and can operate successfully at speeds up to 55 MPH (35 MPH for LP). Poly-fil® tires prevent costly down time and provide uninterrupted service which will greatly enhance cost effectiveness.

Contact Information

TEL: (562) 802-8834 • FAX: (562) 921-7363
INTERNET: www.polycoatusa.com
E-MAIL: polyfil@polycoatusa.com



CALIFORNIA

14722 Spring Avenue
Santa Fe Springs, CA 90670-5108 USA

TEXAS

2100 Reliance Parkway
Bedford, TX 76021-6122 USA

Poly-fil®

Tire Flat Proofing PRODUCTS



POLYCOAT PRODUCTS

A Division of American Polymers Corporation

Perfecting Polyurea and Polyurethane Chemistry.



Poly-fil® LP - Shore A 10 Durometer

Excellent for applications requiring a wider foot print for flotation type tires that need a soft ride for the equipment and operator.

Applications for Poly-fil® LP:

- Skid steers
- Loaders at transfer stations *(adds traction for pushing as well as flat proofing)*
- Farm and agriculture equipment
- Golf course lawn mowing equipment



Poly-fil® 22 - Shore A 22 Durometer

This material rides slightly harder than the LP and has a little less deflection which results in less heat build up while still providing a soft ride.

Applications for Poly-fil® 22:

- Loaders
- Wheel barrows
- Lawnmowers
- Hand carts
- Tractors
- Pressure washers



Poly-fil® 30 - Shore A 30 Durometer

Will fill the needs of most applications where tire flat proofing is needed. This product may be run at speeds up to 55 MPH for 4 hours. This is a reliable and economical material that will run all day long at 35 MPH.

Applications for Poly-fil® 30:

- Military
- Loaders
- Vehicles running on highway for short durations of speeds @55MPH or lower (i.e. pickups at deer leases, ranch vehicles)
- Construction
- Fork Lifts
- Sea ports
- Airports
- Steel Mills
- Amusement Parks
- Factory vehicles
- Garbage & Sanitation vehicles
- Ports
- Mining & earth moving equipment
- Street sweepers
- Skid Steers



Poly-fil® HP - Shore A 52 Durometer

HP is made for heavy-slow moving equipment where no deflection is wanted or needed. Stratocranes and high reach equipment are ideal applications for HP where stability and safety are paramount.

Applications for Poly-fil® HD:

- Man lift equipment *(essential for safety)*
- Steel mills
- Cranes
- Any slow moving, heavy applications where no deflection is wanted
- Mining applications
- Military
- Sea ports



Polycoat Poly-fil® is a two component system where all the air is removed from the tire cavity and is replaced with a liquid polyurethane rubber. The liquid in the tire cures at room temperature to a soft, resilient rubber that allows the tire to maintain the flexing characteristics of a conventional air filled tire.

Tires with Poly-fil® will not deflate due to puncture or sidewall cuts. Poly-fil® allows equipment to operate at maximum efficiency as it reduces downtime due to flat tires. Poly-fil® also helps extend tire life as the tire will not be subject to changes in air pressure, so the tire does not run under or over-inflated, which can also improve fuel economy.

Down time and tire repair costs are substantially reduced when using tires filled with Poly-fil®, while efficiency and productivity are improved.

Poly-fil® has been manufactured in Santa Fe Springs, California since 1985 by the original chemist that developed the product in 1972.

Equipment/Product Chart

Equipment	LP10	22	30	HP52
Shuttle Cars				●
Tractor	●	●	●	
Personal Carriers	●	●	●	
Lawn Mower Equipment	●	●	●	
Forklifts	●	●	●	
Rough Terrain Forklifts		●	●	
Reach Forklifts			●	
Straight Boom			●	●
Articulating Boom			●	●
Aerial Lifts			●	●
Scissor Lifts			●	●
Street Sweeper		●	●	
Skid Steers	●	●	●	
Front End Loaders	●	●	●	
Haul Trucks			●	
Utility Vehicles	●	●	●	

Consult with your local Polycoat dealer as to whether your equipment can run on this product.

