



PROJECT OVERVIEW

Factory Qualified Installers, JC Waterproofing, Inc., was contracted to waterproofing 86 balconies, 43 landings, walkways and exterior closets for a new construction condominium in San Diego County. Forsyth Consulting had specified a 90 Mil fully reinforced, PC- IM 129, split slab submersible waterproofing system for the project due to a detail in the design, required by Ownership. Partnering with Polycoat Products, Forsyth Consulting provided onsite support throughout the project to a successful installation by JC Waterproofing.

TEAM EXPERIENCE

JC Waterproofing, Inc. has been in the waterproofing industry for 30 years. They specialize in both below and above grade waterproofing. Below grade includes basement walls, planter boxes, elevator pits, retaining walls, and window wells. Above grade involve decks, roof decks, shower pans, corridors, and traffic coatings by Polycoat Products. "with several years in business, we have had the privilege of using many products, and we have found Polycoat Products to be one of the easiest to apply and the finishes are very clean. We have built a great relationship with our product representative, Anthony Perez, as he is always quick to support us every time." Stephanie Contreras, JC Waterproofing Inc.



Photo 1



Photo 2



Photo 3



Photo 4



PROBLEMS / SOLUTIONS

In this project, Forsyth Consulting, Inc., a Building Envelope Consultant based in San Diego, CA identified a design detail that allowed for a exquisite decorative accents on the exterior of each building but that would also, inadvertently, cause a ponding condition at the edge of all decks. Understanding that the condition could cause issues in the future, Forsyth Consulting, Inc. called Polycoat Products to provide a solution that would alleviate additional construction, changes in the design, and still provide a 10-year warranty for his client. A fully reinforced 90 mils of PC IM 129, fully submersible waterproofing membrane was the result. “.in order to protect our work, we went with the best.” Shawn Fitzpatrick, VP, UC Construction. envelope.

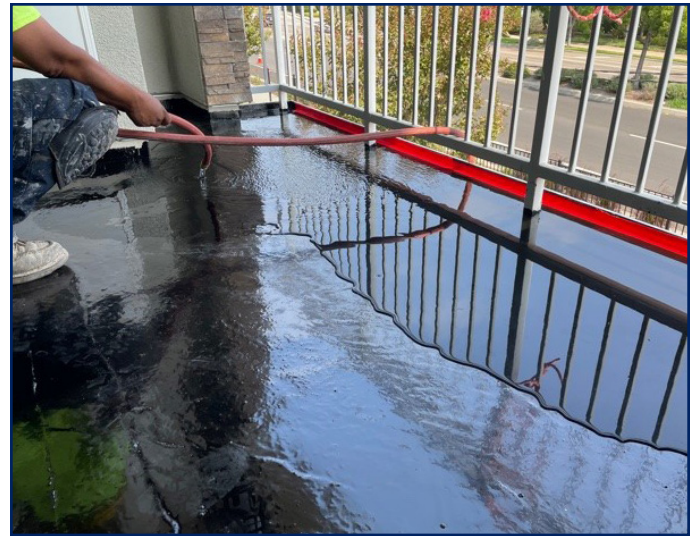


Photo 5

PRODUCTS USED

- PC-IM 129 - 90 mils fully reinforced

RESULTS

50 Words elit sed vulputate mi sit amet mauris commodo quis imperdiet massa tincidunt nunc pulvinar sapien et ligula ullamcorper malesuada proin libero nunc consequat interdum varius sit amet mattis vulputate enim nulla aliquet porttitor lacus luctus accumsan tortor posuere ac ut consequat semper viverra nam libero justo laoreet sit envelope.

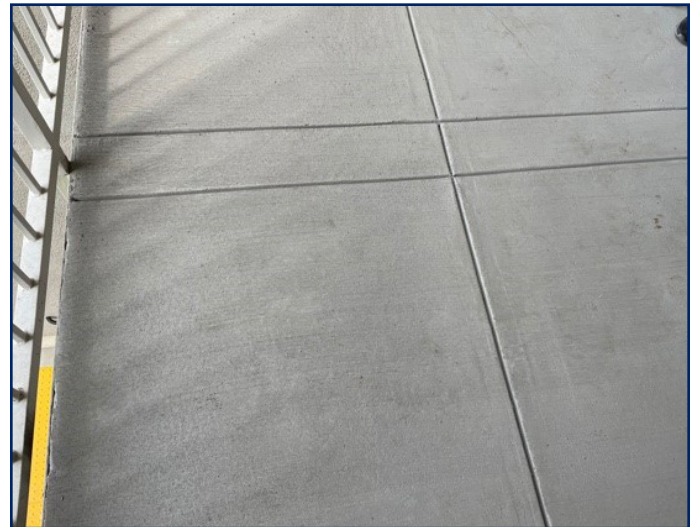


Photo 6